



***2017***  
**Annual Report**



## **Message from the Chief**

In 2017, demands on the agency have steadily grown, specifically emergency responses increased approximately 18%. Fortunately, the Board of Fire Commission supported an increase in staffing at Fire Station # 3 located in Holmes Beach. With the implementation of the Marine Emergency Response Team (MERT) program our responses for marine incidents have increased significantly. The Fire Prevention Bureau, with the implementation of a new inspection software, have a marked improvement in efficiencies. Our personnel have achieved exceptional accomplishments with continued improvements in our overall service delivery and the way we respond to our residents and visitors in the West Manatee Fire and Rescue District. This report will afford us the opportunity to highlight all the services we provide from non-emergency to all-hazard emergency services.

As 2018 unfolds, a great deal of change will encompass the District. The Advanced Life support program is expected to be fully implemented by the end of the year. It is anticipated that the sale of the administration building and the retirement of the debt will place the District in an even stronger financial position. The District's focus is to retain professional, properly trained and fully equipped personnel capable of providing fire protection, fire suppression, rescue and emergency medical services to those citizens in need. The West Manatee Fire and Rescue District is made up of personnel that are dedicated, passionate professionals who are committed to delivering fire and EMS services with skills that exceed the industry standard

We remain mindful of our responsibility to provide the West Manatee Fire and Rescue District with the best possible service, without exception. While remembering "We cannot lead from the rear if you wish to be recognized within and beyond our community as a fire department of Excellence".

Thomas J. Sousa  
Fire Chief

Agency Background .....	1
District Boundary.....	2
Mission Statement .....	3
Financial Highlights .....	4
Operations.....	6
Emergency Medical Services.....	8
Response Times.....	9
Fire Prevention .....	10
Facilities .....	12
Apparatus .....	13
Contact .....	14

# Agency Background

West Manatee Fire & Rescue is an Independent Special Fire Control District located in western Manatee County, Florida. Within the District are the Cities of Anna Maria, Bradenton Beach and Holmes Beach as well as unincorporated areas of Cortez, Tidy Island, Palma Sola, West and Northwest Bradenton. The resident population of the district is approximately 34,705, with an additional seasonal influx of approximately 13,000 non-residents.

WMFR employs 43 full time personnel, of which 36 are suppression personnel divided equally among three shifts that work a 24/48 shift schedule which amounts to a 56-hour work week. The Fire Chief, Administrative Battalion Chief, Fire Marshall, fire inspectors and administrative support personnel are located at the administration building. All non-suppression personnel are assigned to 40-hour workweek schedules.



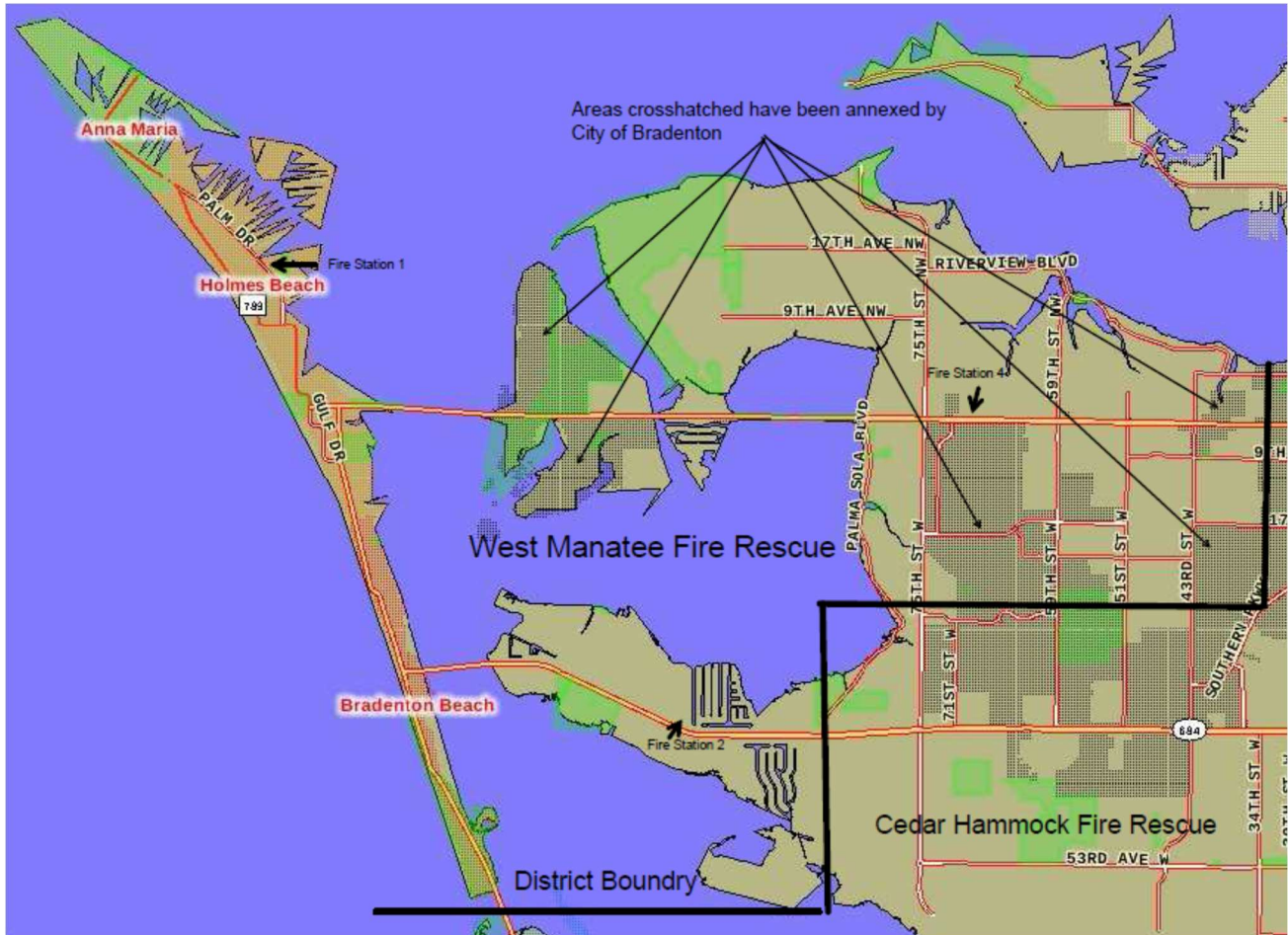
The boundaries of the Fire District are as follows:

**Northern Boundary:** Manatee River and Tampa Bay.

**Eastern Boundary:** The area of 32nd Street West along the city limits of Bradenton.

**Southern Boundary:** A line that borders the City of Bradenton, Cedar Hammock Fire district and the Town of Longboat Key.

**Western Boundary:** The Gulf of Mexico.



Residential development has accelerated with two new subdivisions in Northwest Bradenton. Also, the Manatee County Board of County Commission approved the development plans for Peninsula Bay which is a 350 acres tract along Cortez Road, with the addition of these new residential areas as well as the growth in vacation rentals, it is anticipated that the District's call load will increase.

West Manatee Fire Rescue is committed to providing professional services essential to the safety and well-being of the community. This is accomplished through quick and prepared response, life safety education, prevention, and other related services.

## **OUR VALUES:**

In order to exceed the expectations of the community that places their trust in us, we will hold one another accountable for carrying out our mission, living our values, and seeing our vision become reality.

## **OUR COMMITMENTS:**

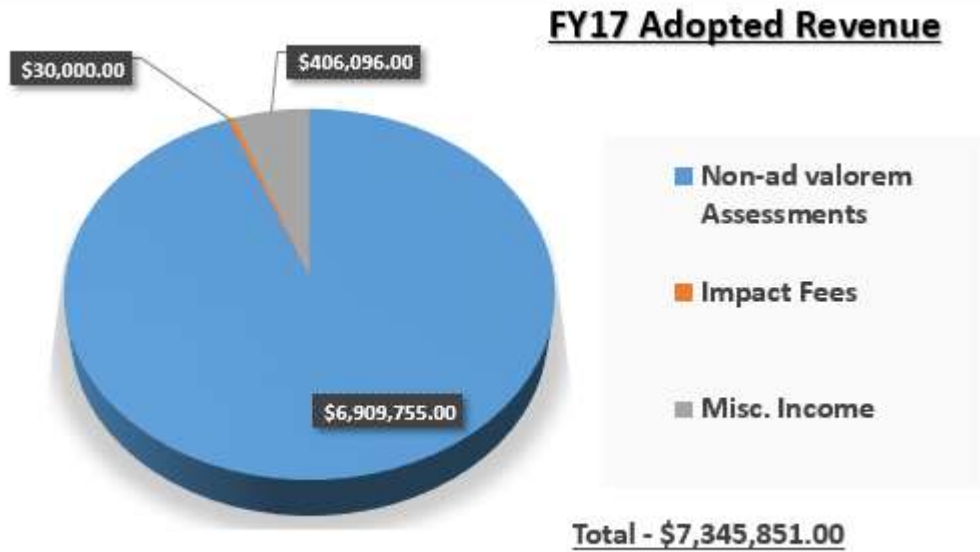
### **TO OUR RESIDENTS AND THE COMMUNITY:**

We are committed to meeting the needs and expectations of our residents today and in the future, to develop innovative solutions to the service delivery challenges we encounter, and to provide rapid response delivered by dedicated and caring professionals.

### **TO OUR EMPLOYEES:**

We are committed to providing a working environment characterized by trust and respect, supportive of open and honest communication, and fostering professional growth, community involvement, and illustrating the highest ethical, moral and personal standards to incite public trust.

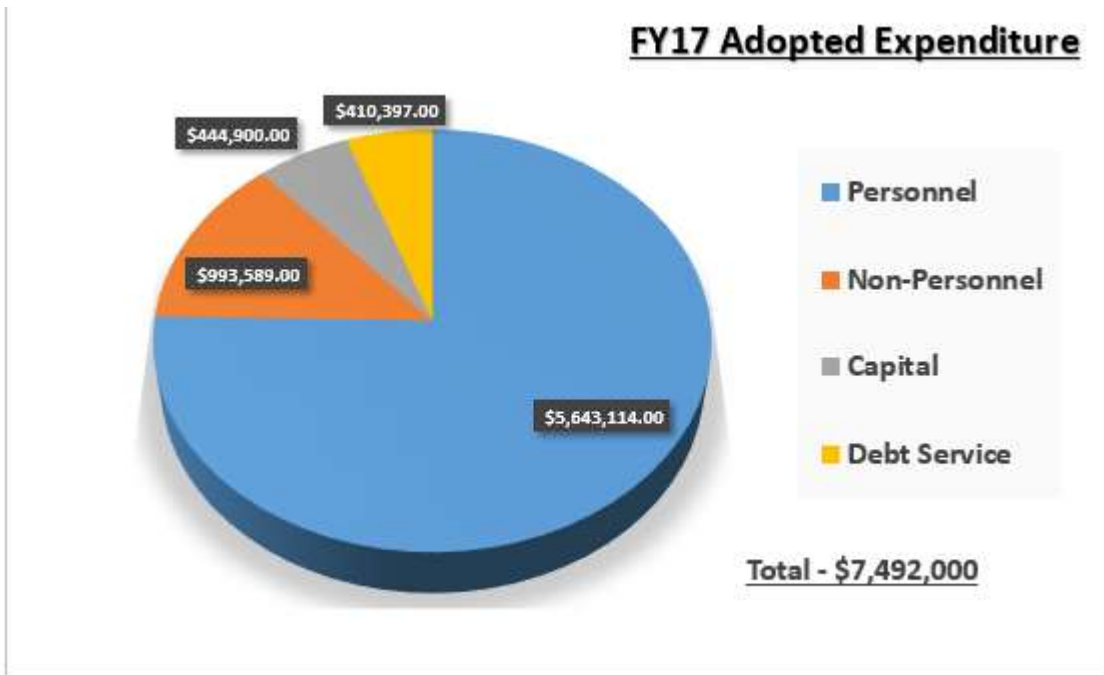
# Revenues



## **Summary of Revenue:**

This summary includes revenue from assessments, fees, leases and sale of surplus equipment. The discount for early pay has been increased from 3.2% to 4%. This was based on recent data which indicated that property owners were taking advantage of the discount. Revenue increased approximately 2.2 percent over the previous year.

# Expenditures



**Summary of Expenditures**

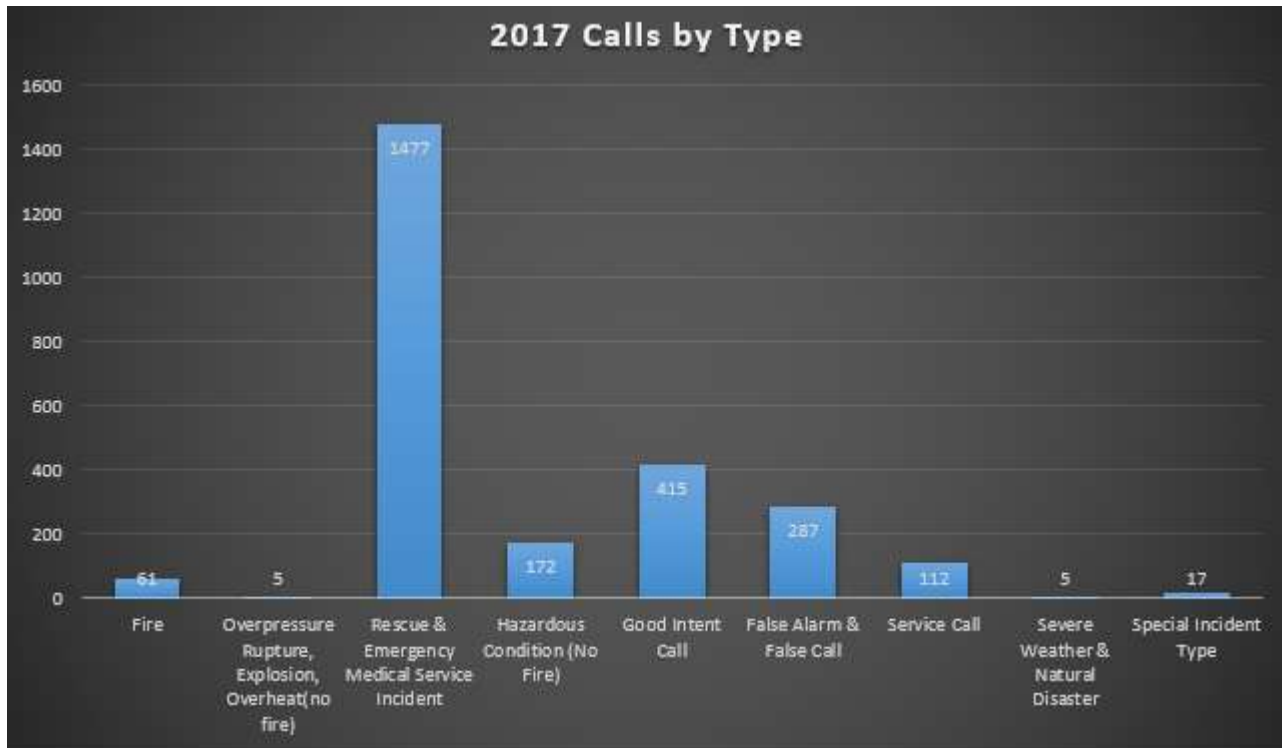
Summary provides an overview of major category expenditures for FY 17. Expenditures for personnel services increased approximately 2.0% over the previous fiscal year. Non-Personnel expenses remained flat and Capital decreased from the previous year. The District’s total debt was \$3,175,871 with principle payments of \$328,645.



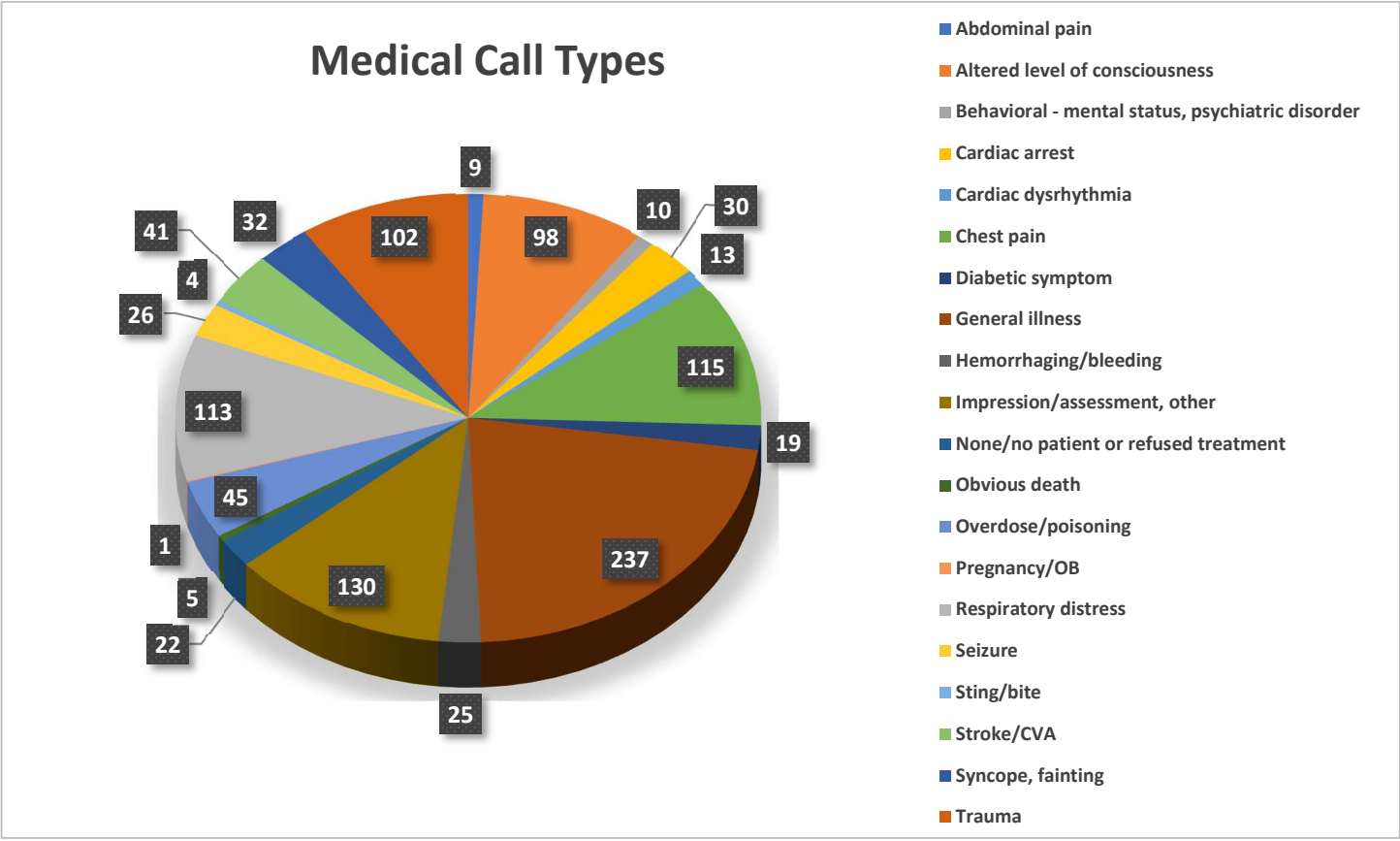
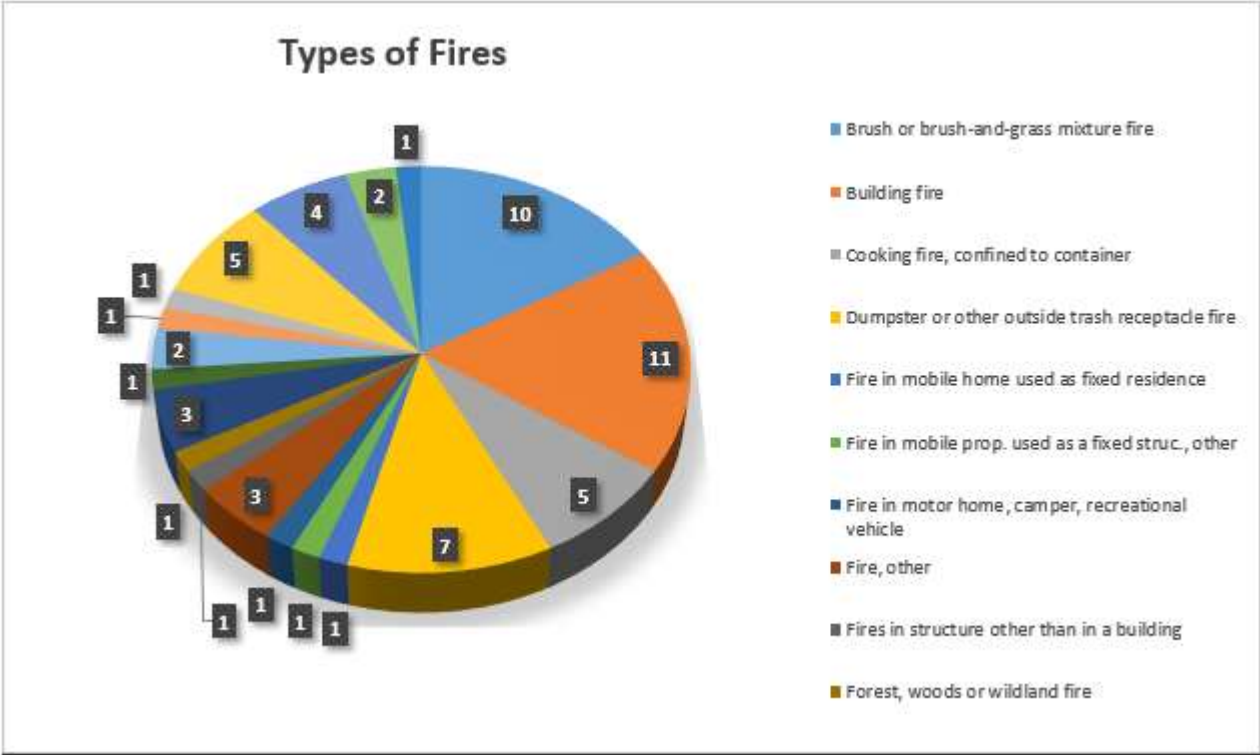
# Operations

## RESPONSE ACTIVITY

The Operations Division of West Manatee Fire Rescue is responsible to manage the Emergency and Special Operations Divisions. Currently, thirty-six (36) personnel are assigned with 12 on duty per 24-hour operational shift. Personnel are tasked to respond to calls for service which include structure fires, emergency medical services, vehicle accidents, water and beach rescue, hazardous materials spills and releases and marine fire and rescue responses. The operations division responded to 2551 incidents in 2017. Approximately 60% of those incidents were emergency medical responses.

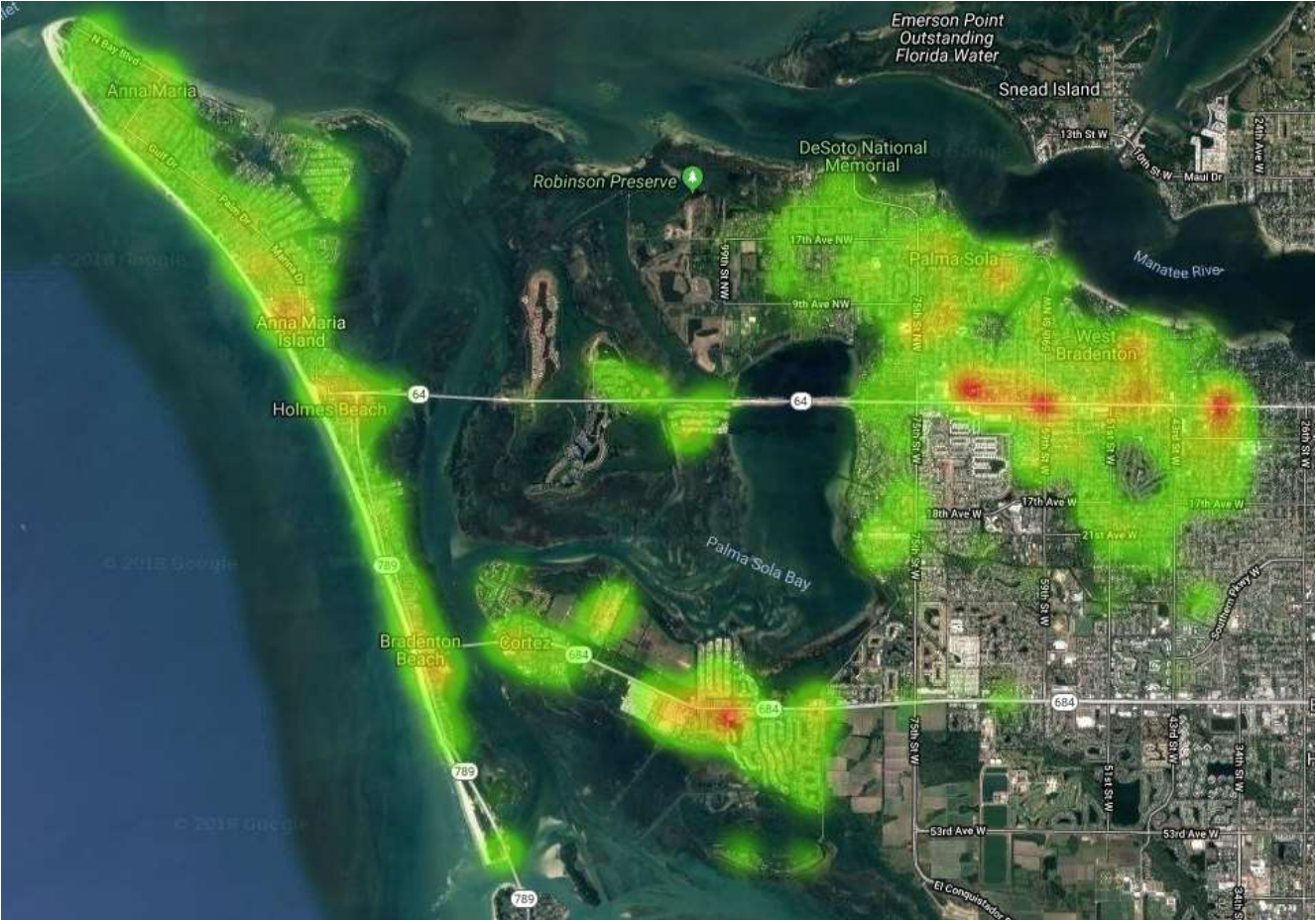


The District responded to 61 incidents categorized as fire incidents with 11 building fires. The value of property lost was approximately \$128,951 in 2017.



**EMS Heat Map**

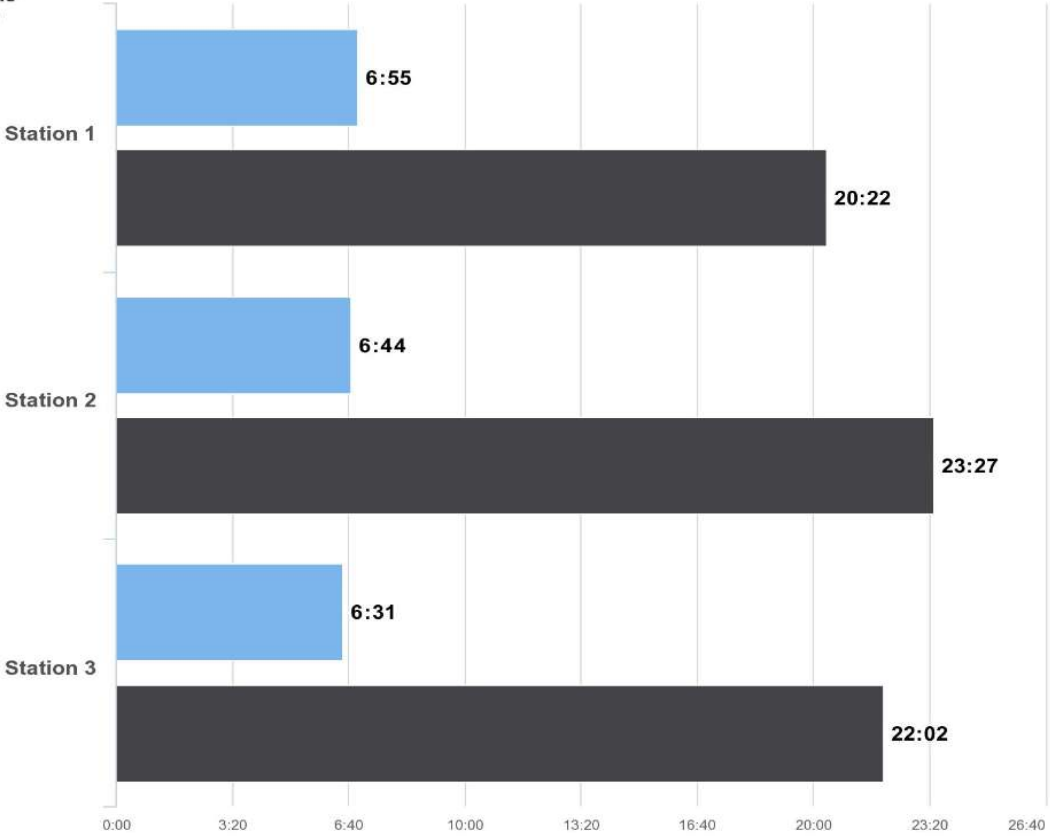
Response personnel responded to 1477 emergency medical incidents and provided basic life support care. The map below depicts the EMS call volume by geographic location for 2017. The orange areas indicate high call volume in the designated locations.



# Times by 90 Percentile

01/01/17-12/31/17

■ Arrival Time  
■ Total Time



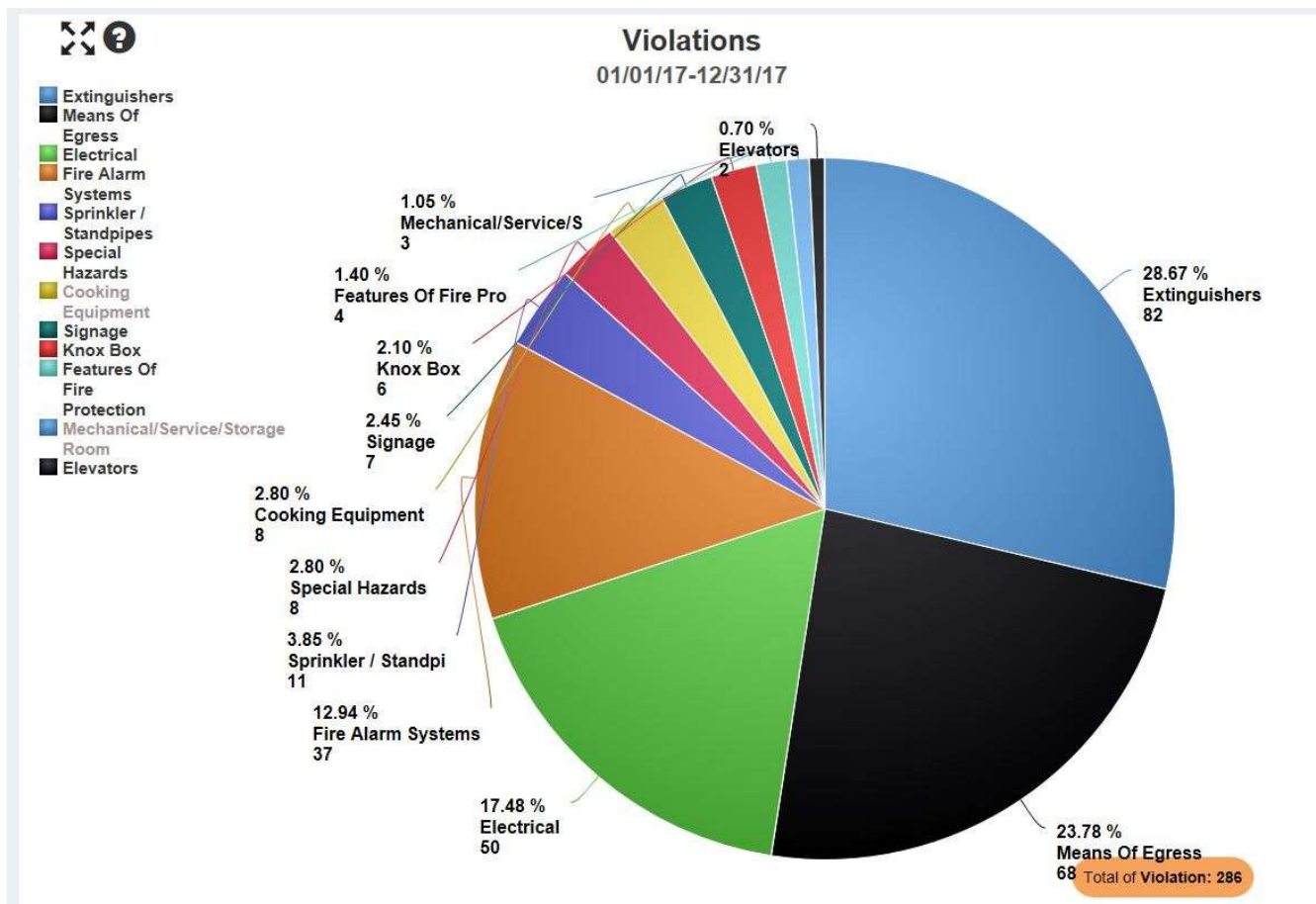
## Fire Prevention

Fire Prevention had an extraordinary year in 2017. The division connected with nearly 7188 individuals within our community, providing life-saving information regarding fire and life safety code and enforcement, smoke alarm installations, fire extinguisher classes, fire investigations, vial of life programs, bicycle safety rodeos, among many other topics.

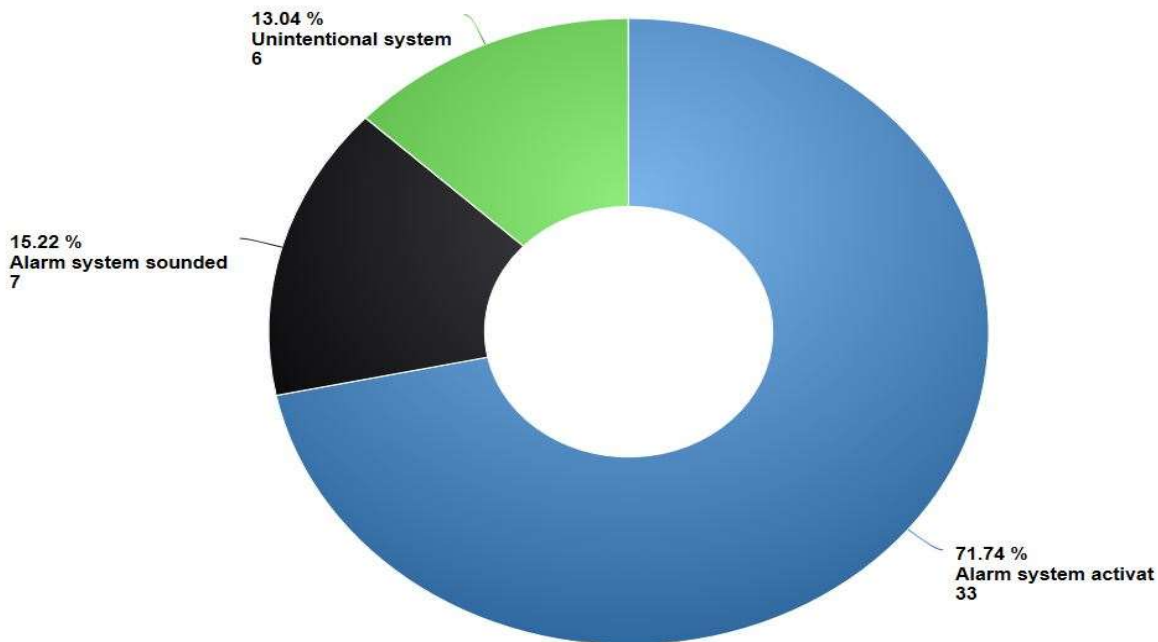
The prevention division's efforts to quantify our work has become more manageable with the introduction of our new records management system (RMS). The new RMS will dramatically increase the division's capability regarding fire inspection services. The system will allow all inspectors to complete and document fire inspections in the field utilizing their assigned smart phone.

## INSPECTIONS

The fire prevention staff completed 940 fire and life safety inspections, correcting thousands of life safety hazards and fire threats.



### False Alarm & False Call



Total of Detailed Incident Type: 46

**Station 1**  
**407 67<sup>th</sup> Street West**  
**Bradenton, FL 34209**



Fire Station # 1 was opened in the fall of 2016. The facility was engineered to withstand hurricane force winds. This facility will serve as our operations center during major storm events.

**Station 2**  
**10350 Cortez Road West**  
**Bradenton, FL 34210**



Fire Station # 2 was re-modeled in 2014. The re-model included a complete tear down and rebuild of the living quarters to current building and wind code.

**Station 3**  
**6001 Marina Drive**  
**Holmes Beach, FL 34217**



Fire Station # 3 was originally constructed in 1983. In 2012 the interior spaces were re-modeled to accommodate additional personnel.

**Administration Building**  
**6417 3rd Avenue West**  
**Bradenton, FL 34209**



The Administration Building was purchased and re-modeled in 2010. This facility serves as our administrative offices. The facility is also utilized by governmental and non-governmental agencies.

## Emergency Response Apparatus

**2014 Pierce Impel, E111**



**2016 Pierce Enforcer Aerial, L129**



**2004 Pierce Enforcer, E131**



**2017 Rescue 138**



**2009 Command Vehicle, B-1**



**2016 Marine 1 Fire Boat**





## Contact Information

Administrative Headquarters  
6417 3<sup>rd</sup> Ave West  
Bradenton, Fl. 34209  
941-761-1555  
[Admin@wmfr.org](mailto:Admin@wmfr.org)

